

## Board Members

Shelley Harms, President

Jen Perga, Vice President

Doug Pfenninger, Treasurer

Chris Royer, Co-Secretary

Louise VanAlstyne, Co-Secretary

Sue Closson

David Woodworth

Katherine Oneglia

## Stay in touch with the Winchester Land Trust

Winchester Land Trust's Facebook page is the best way to see the latest information regarding events such as our recent hike on the Waterbury Turnpike. Our website is [www.winchester-landtrust.org](http://www.winchester-landtrust.org). You can email us at [winchesterlandtrust@yahoo.com](mailto:winchesterlandtrust@yahoo.com) or call us at 860-738-2811. We receive our "snail mail" at PO Box 10, Winchester Center, CT 06094.



**The WLT Annual Meeting will be August 25 at 4 p.m.  
at the gazebo on the Winchester Center green.**

***Winchester Land Trust  
PO Box 10  
Winchester Center, CT 06094***

NONPROFIT ORG.  
US POSTAGE  
PAID  
WINSTED, CT  
PERMIT NO. 11



***Pen and Ink Illustration by Margaret A. Race***



# Winchester Land Trust

August 2013 Newsletter

## Celebrating 25 Years of Conservation

On June 22, more than 70 people gathered at the home of Linda and Doug Pfenninger in Winchester Center to celebrate the Winchester Land Trust's 25<sup>th</sup> anniversary year. Partygoers enjoyed delicious food, the spectacular setting, perfect weather, and Dave Godding's band, Dark Horse, who played country blue-grass music. Generously sponsored by the Sherwood Family, Goulet Printery, Law Office of David S. Torrey, Northwest Community Bank, O&G Industries, Realty Executives, SOC Construction, and Toth Insurance, the event was a great success! Donations to the silent auction were provided by the Gilson Cinema, Infinity Hall, Ledgebrook Spirit Shop, Morsel Munk, Gay Schempp, Candy Perez and the Warner Theatre.

In its 25 years, the WLT has grown to 250 members, with 361 acres of preserved land. It is a busy, all-volunteer organization, preserving and caring for land, providing educational events, leading hikes, and engaging the community at events like the Fall Foliage Festival, Winsted Farmers Market and Winchester Grange Fair.

In addition to relying on generous contributions from you, the WLT seeks grants to support

its work. Recently, for example, we received support from the New England Grassroots Environmental Fund to develop and print the trail maps included in this newsletter. The Farmington River Coordinating Committee (FRCC) is funding the costs associated with acquiring a parcel along the Still River. The Federal Natural Resources Conservation Service of the U.S. Department of Agriculture has awarded us two contracts that will help steward our largest preserve: these will fund a Management Plan for the 283 acres of Hurlbut Field and Ehrich Woods,

and the conversion of the field portion of Hurlbut Field to wildlife-friendly warm-season grasses.

Of course, our volunteers are the backbone of the all-volunteer organization. WLT is grateful to Yohann Hanley, Pete Marchand, Jay Martin, New Balance Running Academy, Alec and Christian Royer, and Craig Snyder for their stewardship work. The WLT is also fortunate to have a wonderful board of directors and a dedicated volunteer webmaster, Seth Girardin at <http://www.augustudios.com>.

With your help, we look forward to many exciting projects in the next 25 years. Thank you for supporting the Winchester Land Trust.



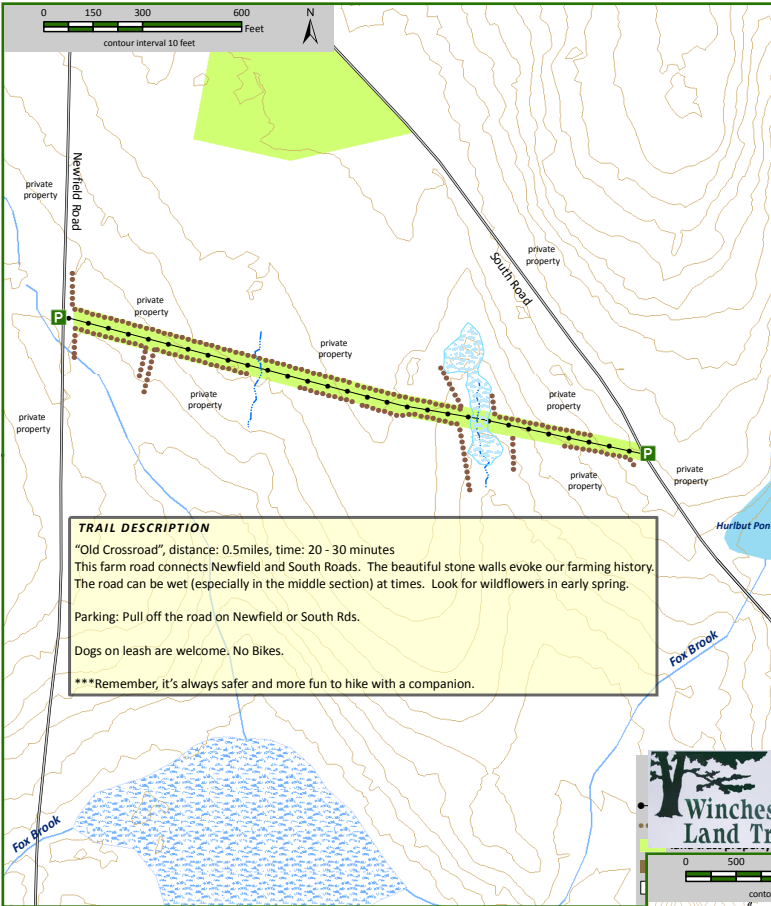
*The family of Ruth and George Sherwood (a founding member of Winchester Land Trust).*



## OLD CROSSROAD TRAIL (2 acres)

PO Box 10 ■ Winchester Center, Connecticut  
 860.738.2811 ■ winchesterlandtrust@yahoo.com ■ www.winchester-landtrust.org

A PROPERTY OF THE WINCHESTER LAND TRUST



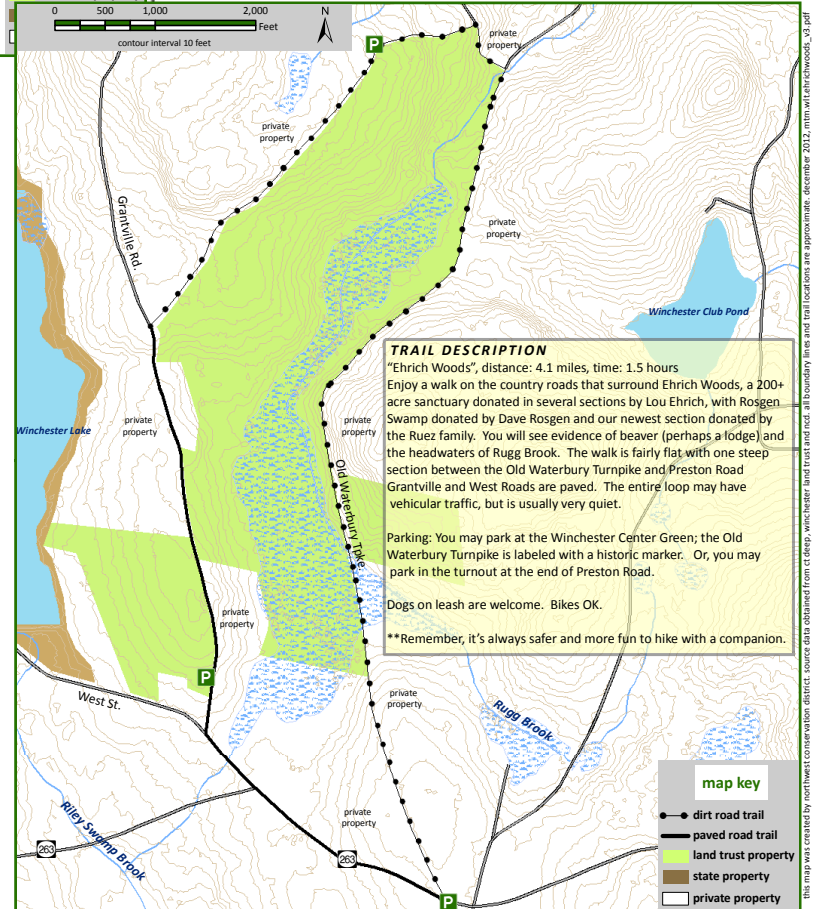
**TRAIL DESCRIPTION**  
 "Old Crossroad", distance: 0.5miles, time: 20 - 30 minutes  
 This farm road connects Newfield and South Roads. The beautiful stone walls evoke our farming history. The road can be wet (especially in the middle section) at times. Look for wildflowers in early spring.  
 Parking: Pull off the road on Newfield or South Rds.  
 Dogs on leash are welcome. No Bikes.  
 \*\*\*Remember, it's always safer and more fun to hike with a companion.



## EHRICH WOODS (200 acres)

PO Box 10 ■ Winchester Center, Connecticut  
 860.738.2811 ■ winchesterlandtrust@yahoo.com ■ www.winchester-landtrust.org

A PROPERTY OF THE WINCHESTER LAND TRUST



**TRAIL DESCRIPTION**  
 "Ehrich Woods", distance: 4.1 miles, time: 1.5 hours  
 Enjoy a walk on the country roads that surround Ehrich Woods, a 200+ acre sanctuary donated in several sections by Lou Ehrich, with Rosgen Swamp donated by Dave Rosgen and our newest section donated by the Ruez family. You will see evidence of beaver (perhaps a lodge) and the headwaters of Rugg Brook. The walk is fairly flat with one steep section between the Old Waterbury Turnpike and Preston Road Grantville and West Roads are paved. The entire loop may have vehicular traffic, but is usually very quiet.  
 Parking: You may park at the Winchester Center Green; the Old Waterbury Turnpike is labeled with a historic marker. Or, you may park in the turnout at the end of Preston Road.  
 Dogs on leash are welcome. Bikes OK.  
 \*\*Remember, it's always safer and more fun to hike with a companion.



**map key**

- dirt road trail
- paved road trail
- land trust property
- state property
- private property

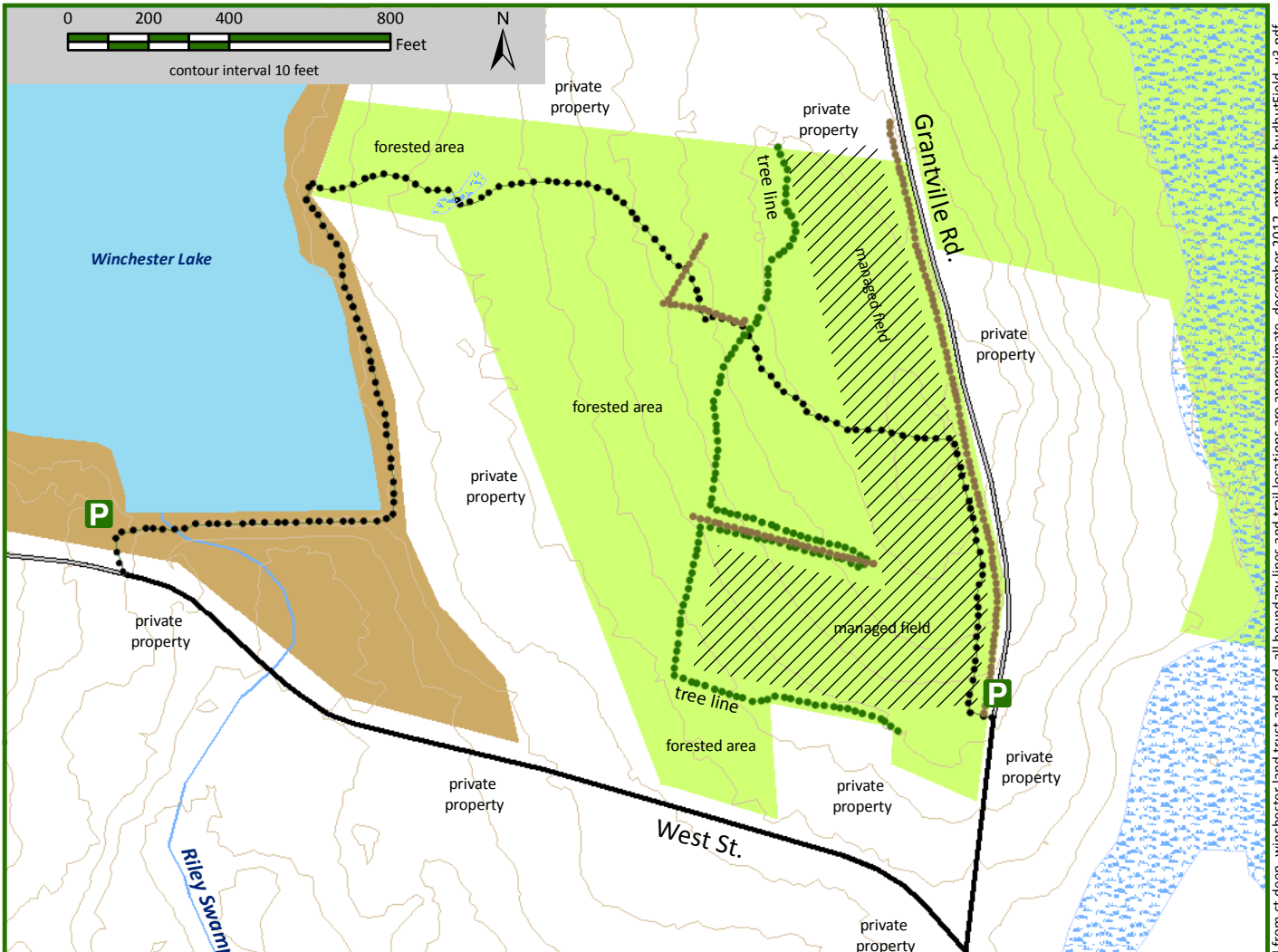




# HURLBUT FIELD - WINCHESTER LAKE LOOP (40 acres)

PO Box 10 ■ Winchester Center, Connecticut  
 860.738.2811 ■ winchesterlandtrust@yahoo.com ■ www.winchester-landtrust.org

A PROPERTY OF THE WINCHESTER LAND TRUST



**TRAIL DESCRIPTION**

“Hurlbut Field -Winchester Lake Loop”, distance: 1.4 miles, time: 1 hour  
 Enjoy the walk through Hurlbut Field where the WLT has recently planted native shrubs to attract native insects, birds and other fauna. The trail starts at the parking pullout on Grantville Rd. and is mown along the edge of the field heading north. The trail then cuts across the field to the forested area. Once in the forest, you will cross bog bridges to reach Lake Winchester. You will see the the barbed-wire enclosure where bear fur is collected for a study identifying bears by their DNA. At the lake, you will find the trail that borders the lake perimeter and continues to the Boat Launch. From there, continue along West Road (paved) back to your car.  
 Alternate route: park at the Winchester Lake Boat Launch and walk the loop from there.

We prefer no dogs between May and September due to nesting bobolinks. If you do bring a dog, please stay on the path and use a leash. Please, no bikes.

Parking: Pullout on Grantville Rd. at the Winchester Land Trust sign or at the CT State Boat Launch on Winchester Lake.

\*\*\*Remember, it's always safer and more fun to hike with a companion.

**map key**

- field & forest trail
- paved road trail
- stone wall
- land trust property
- state property
- private property



this map was created by northwest conservation district. source data obtained from ct deep, winchester land trust and ncd. all boundary lines and trail locations are approximate. december 2012. mtm.wit.hurlbutField\_v3.pdf